

STEALTH AUDIT

Tactical Reporting
Surgical Accuracy

STEALTH AUDIT

Desk

Server

StealthAUDIT Framework

22 Data Collection Sources

5 Change & Remediation Modules

Agent-less/Applet Architecture

XML-based, Multi-threaded Engine

Intuitive Policy & Configuration Management

Comprehensive Auditing & Reporting

Excha

ive

Directory

DESKTOP

AUDIT Fram

SERVER

22 Data Collection Sources

5 Change & Remediation Modules

Agent-less/Applet Architecture

XML-based, Multi-threaded Engine

Intuitive Policy & Configuration Management

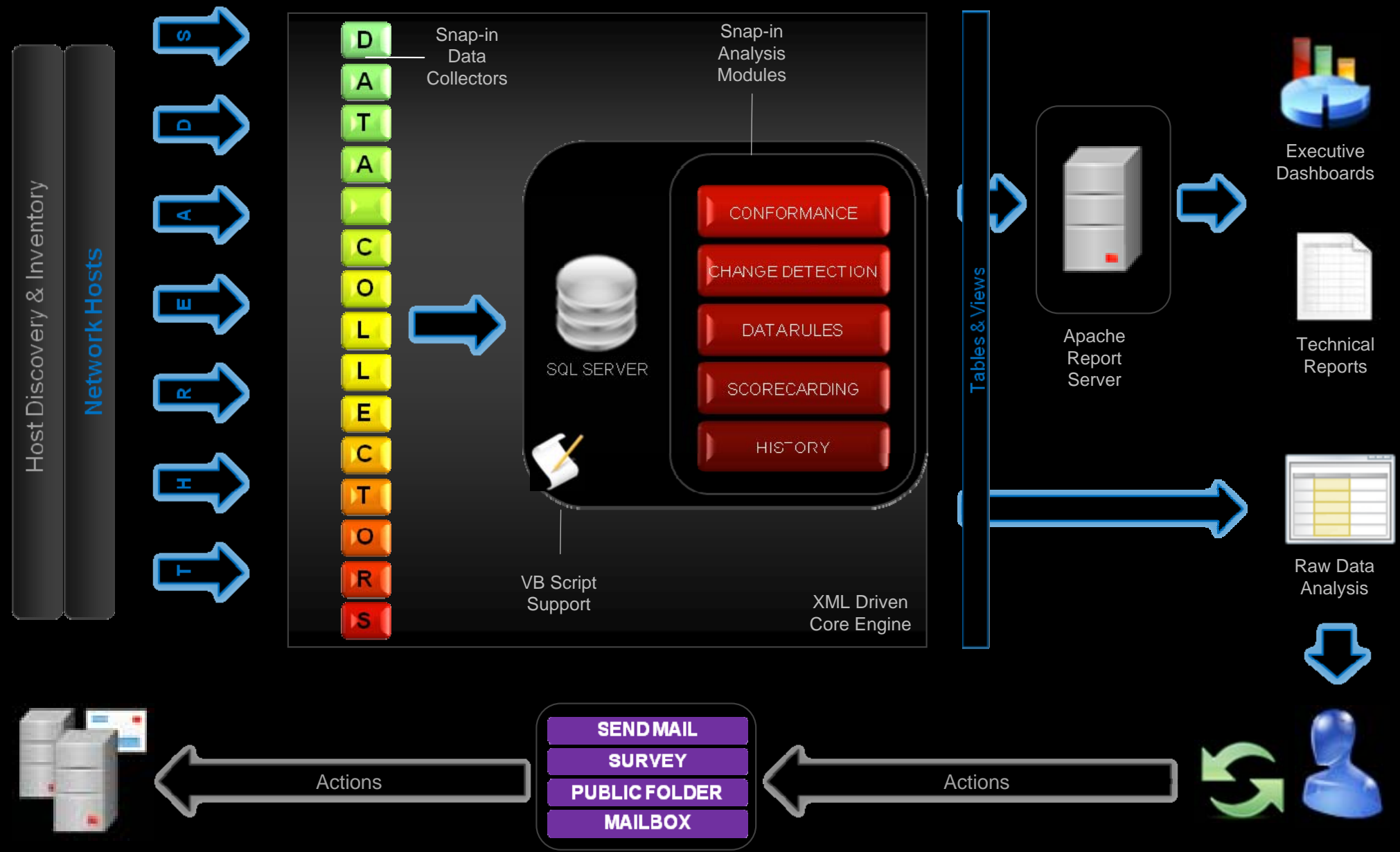
Comprehensive Auditing &

EXCHANGE

**ACTIVE
DIRECTORY**

STEALTHAUDIT

StealthAUDIT Architecture

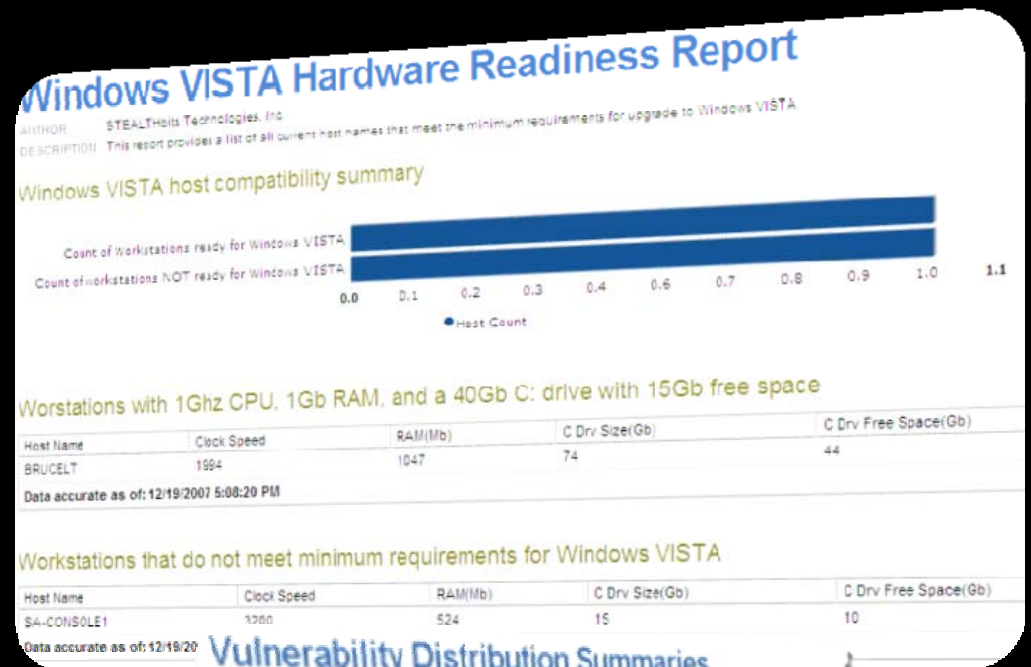


STEALTHAUDIT



DESKTOPS – Core Competencies

- Patch Validation
- Hardware & Software Inventory
- Operating System Configuration
- Security Group Membership
- Application Auditing



Desktops

➤ Where does StealthAUDIT fit?

- Hardware, Software, Security, Migration Preps, Maintenance & Clean-up, Configuration Management, Health & Diagnostics, and more.

➤ Why should you use StealthAUDIT?

- Validate all patches and hotfixes are applied to all systems at both the operating system and application levels
- Identify malicious and unapproved software installed on user's machines
- Verify configuration compliance according to Organizational, Regulatory, and Industry Best Practice standards
- Understand permissions, rights, and access to all or information sensitive workstations
- Perform gap analysis to determine readiness for migrations or upgrades



SERVERS – Core Competencies

- Compliance
- Health & Diagnostics
- Hardware & Software Inventory
- Configuration Management
- Vulnerability & Security Assessment

Risk Score Card by Severity
AUTHOR STEALTHbits Technologies, Inc.
DESCRIPTION This report provides a score card for each vulnerability grouped by severity and by host name.

Vulnerabilities by Severity by Host [Expand](#)

Score	PropertyValue	SA_Description
Severity : CRITICAL! (COUNT=212)		
Host : PD0230 (COUNT=4)		
1	NOT PATCHED	Hosts where the MS07-044 security bulletin for MS Excel has NOT been applied.
1	NOT PATCHED	Hosts where the MS07-024 security bulletin has NOT been applied.
1	NOT PATCHED	Hosts where the MS07-036 security bulletin for Excel has NOT been applied.
1	NOT PATCHED	Hosts where the MS07-023 Security Bulletin for Excel has NOT been applied.
Host : SBNJENG02 (COUNT=1)		
20		Offline host has unknown set of vulnerabilities
Host : SBNJENG04 (COUNT=1)		
1	NOT PATCHED	Hosts where the MS06-012 security bulletin for Excel 2003 has NOT been applied



Servers

➤ Where does StealthAUDIT fit?

- Hardware, Software, Security & Vulnerability Assessment, File System Maintenance & Clean-up, Configuration Management, Health & Diagnostics, and more.

➤ Why should you use StealthAUDIT?

- Validate all patches and hotfixes are applied to all systems at both the operating system and application levels
- Comprehensive, flexible, simplified Server baseline and configuration management
- Verify configuration compliance according to Organizational, Regulatory, and Industry Best Practice standards
- Understand permissions, rights, and access to all or information sensitive servers
- Maintain system health through proactive capacity planning and removal of stale or unused resources

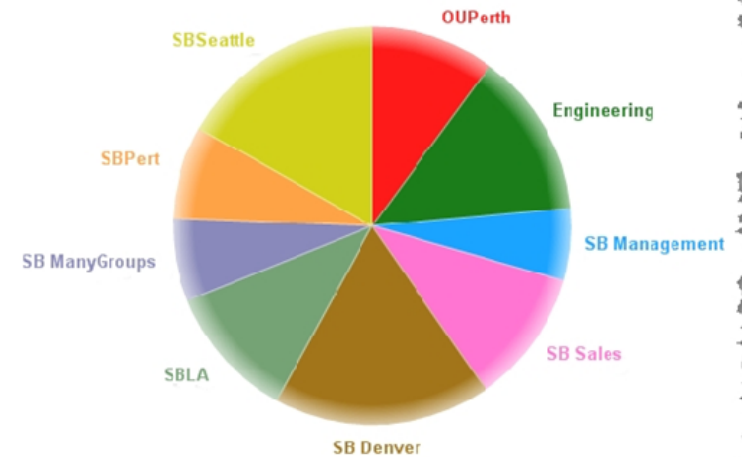


EXCHANGE – Core Competencies

- Configuration Management
- Message-flow Statistics
- Exchange Assessment
- Compliance
- Operating System Dependencies
- Active Directory Dependencies
- Exchange InFocus Dashboard
- Capacity Planning and Trending

Distribution List Member Chart

AUTHOR STEALTHbit Technologies, Inc.
 DESCRIPTION This chart provides a breakdown of DL membership.



Exchange Baseline Scorecard Report By Severity

AUTHOR STEALTHbit Technologies, Inc.
 DESCRIPTION This report provides a list of Exchange server baseline exceptions grouped by severity.

Counts



Details

SA_Index	Score	SA_Description	Knowledge	PropertyOneValue
Severity: High (COUNT=8)				



EXCHANGE

➤ Where does StealthAUDIT fit?

- StealthAUDIT is a complete Exchange management solution providing comprehensive visibility into the entire Exchange application and all of its associated dependencies

➤ Why should you use StealthAUDIT?

- Detect critical configuration changes to reduce and avoid outages
- Identify growth trends to assist in capacity planning efforts
- Programmatically Assess and Clean-up stale or unneeded content (PF, MB, DL)
- Obtain complete visibility into who has access to what and where
- Analyze Tracking Logs while reducing storage space and network bandwidth by up to 96%



ACTIVE DIRECTORY – Core Competencies

- Advanced Security
- Compliance
- Infrastructure
- Maintenance & Clean-up
- Operations



Active Directory Account Actions
AUTHOR: STEALTH Technologies, Inc.
DESCRIPTION: This report provides listing of computers where Active Directory User Accounts have been created or deleted and where user account creation or deletion events occurred.

User Account Creation Events

EventDescription	EventID	EventDateTime	TargetUser	Source
UserDomain: SACLUSTER (COUNT=7)				
User Account Creation	642	10/16/2007 1:42:25 PM		CreatedB...
User Account Creation	642	10/17/2007 2:20:37 PM	SACLUSTER\user-4	SATDO...
User Account Creation	642	10/18/2007 12:30:01 PM	SACLUSTER\revchadmin	SACLUS...
User Account Creation	642	10/18/2007 1:42:39 PM	SACLUSTER\revttrust	SACLUS...
User Account Creation	642	10/18/2007 1:49:22 PM	SACLUSTER\SAAdmin	SACLUS...
User Account Creation	642	11/1/2007 9:51:17 AM	SACLUSTER\raadmin2	SACLUS...
UserDomain: SATDOMAIN (COUNT=2)				
		11/1/2007 9:51:18 AM	SACLUSTER\PH Burgard	SATDO...
			SACLUSTER\PH Burgard	SATDO...

Data accurate as of 11/13/2007 11:48:35 AM

User Account Deletion Events

EventDescription	EventID	EventDateTime	TargetUser	Source
UserDomain: SACLUSTER (COUNT=1)				
User Account Deletion	630	10/18/2007 12:36:01 PM		DeletedB...
UserDomain: SATDOMAIN (COUNT=0)				
			SACLUSTER\revttrust	SACLUS...



ACTIVE DIRECTORY

➤ Where does StealthAUDIT fit?

- StealthAUDIT is a complete Active Directory management solution providing comprehensive visibility into the entire AD structure

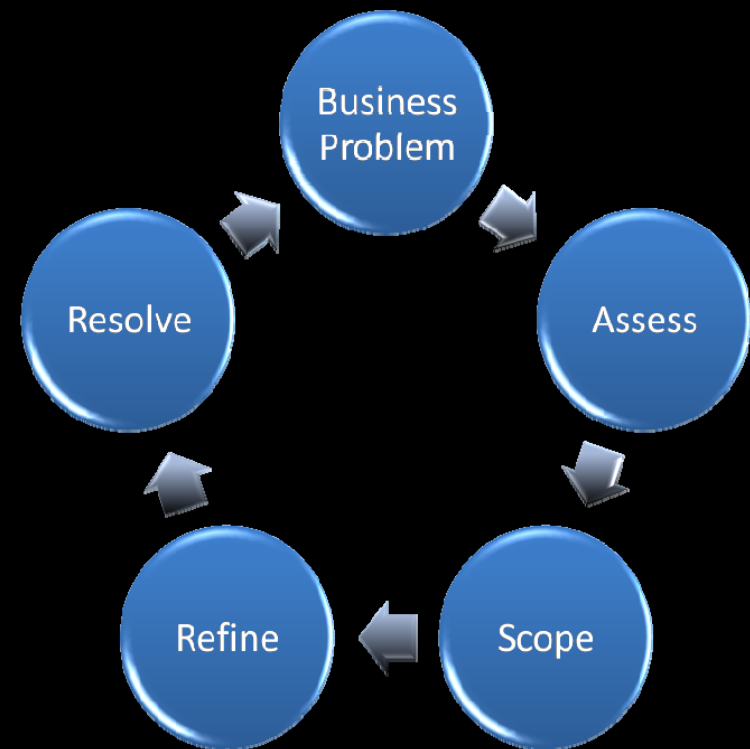
➤ Why should you use StealthAUDIT?

- Determine who is making changes in AD
- Adhere to configuration standards
- Optimize the performance of your AD infrastructure
- Streamline clean-up and maintenance efforts with Action Modules
- Understand policy enforcement



StealthAUDIT Action Module Framework

- Closes out the loop
 - *Assess, Refine, Resolve*
- Works with real-world workflow
- Automates mass operations
 - Public Folders
 - Mailboxes
- Used when targets exceed practical limits of manual operations



StealthAUDIT Action Module Framework

Example – Public Folders

