

Active Directory and Transport Server

Kamal Abburi
Premier Field Engineering

Source : TechNet Documentation

Premier Field Engineering - What do we do

Proactive Services

Workshops

Health Checks

Risk Assessments

Supportability Reviews

Chalk & Talks

Knowledge Transfers

Reactive Support

Troubleshooting & RCA

Partner with PG

Technical Leadership

Global Community

Onsite and Remote

Active Directory

- Domain Controller
- Read-Only Domain Controller
- Global Catalog
- 32-Bit or 64-bit Domain Controllers
- Partitions – Schema, Configuration, Domain
- Active Directory Sites

Exchange - Access to Active Directory

- Exchange Setup
 - Prepare Active Directory and Domains
- Exchange Information Stored in AD
 - Schema Partition
 - Configuration Partition
 - Domain Partition
- Active Directory Sites

Active Directory Driver

- Core component of Exchange
- Allows Exchange services to create, modify, delete, and query AD Data
- Microsoft Exchange Active Directory Topology Service
- Topology Discovery

Event ID 2080 from MExchangeDSAccess

Event Type: Information

Event Source: MExchangeDSAccess

Event Category: Topology

Event ID: 2080

Computer: MyComputer

Description:

Process MAD.EXE (PID=1808). DSAccess has discovered the following servers with the following characteristics:

(Server name | Roles | Reachability | Synchronized | GC capable | PDC | SACL right | Critical Data | Netlogon | OS Version)

In-site:

domaincontroller1.company.com CDG 7 7 1 0 0 1 7 1

domaincontroller2.company.com CDG 7 7 1 0 1 1 7 1

domaincontroller3.company.com CDG 7 7 1 0 1 1 7 1

Out-of-site:

For more information, KB 316300

Roles

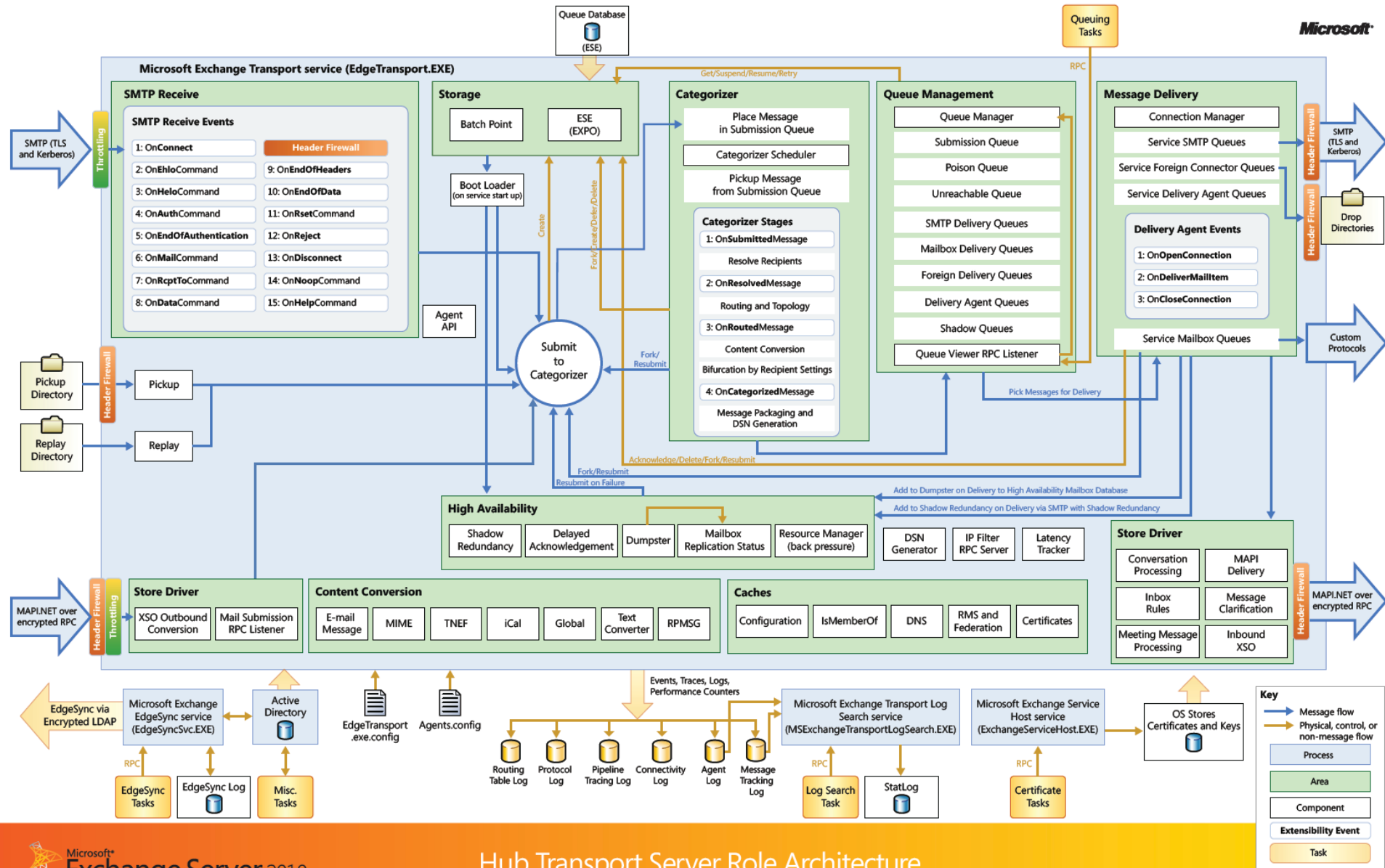
- CAS
 - Authentication, Discovery
- Hub Transport
 - Message categorization
 - Routing
- Mailbox
 - Configuration and Settings
- UM
 - Dial plans, IP gateways, and hunt groups
- Edge Transport
 - What's that ?

AD Sites

- Hub Transport server must be able to communicate directly with a global catalog server
- Mailbox servers should be located in the same site as a Hub Transport server.
- A Client Access server must be deployed in each site that contains Mailbox servers
- Single Site or Multiple Sites

Transport Architecture

Microsoft



Hub Transport Server Role Architecture

Transport Server

Roles

- Hub Transport
 - Internal Mail Flow
 - Policy and Compliance
 - Anti-Spam and Antivirus
- Edge Transport
 - Internet Mail Flow
 - Anti-Spam and Antivirus
 - Edge Transport Rules
 - Address Re-writing

Transport Servers

Connectors

- Receive Connectors
 - Listener to Receive Messages
 - Single Server Sourced
 - Default Connectors
 - Client
 - Default
 - Usage
 - Internet
 - Internal
 - Client
 - Anonymous

Transport Servers

Connectors

- Send Connectors
 - Logical Gateway to send messages
 - Controls Outbound Connections
 - Deliver to Next Hop
 - Global Scope
 - Usage
 - Internal
 - Internet
 - Partner
 - Custom
 - Address Space

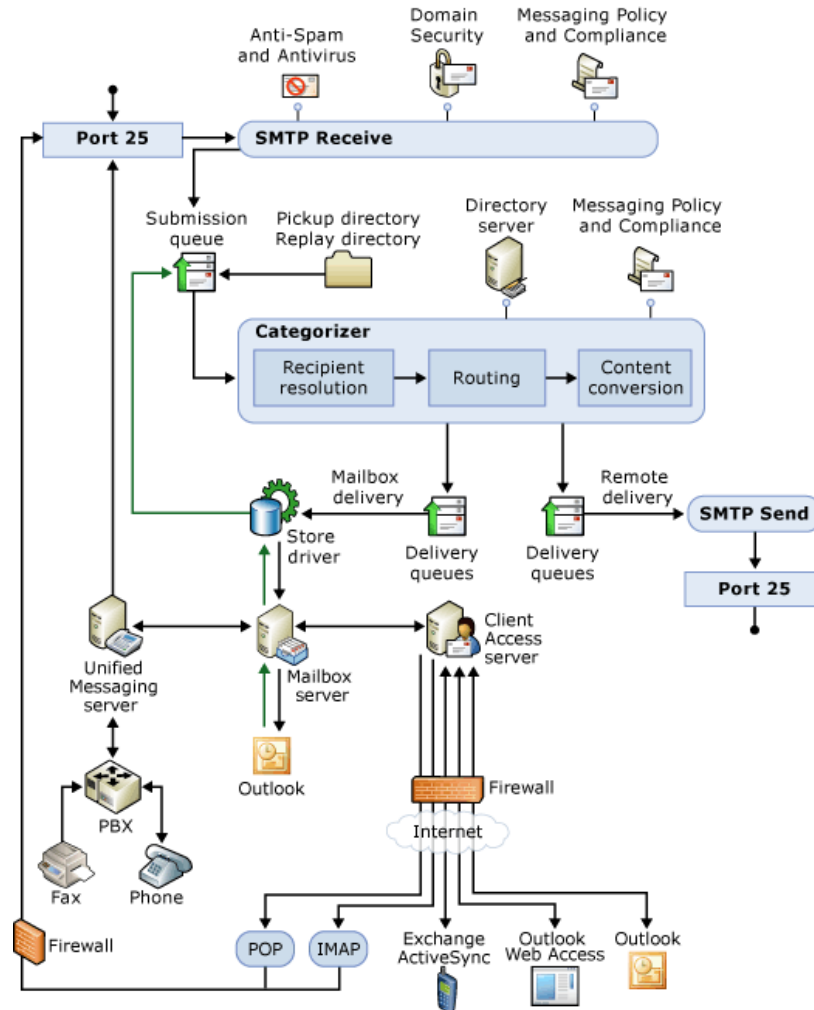
Transport Servers

Connectors

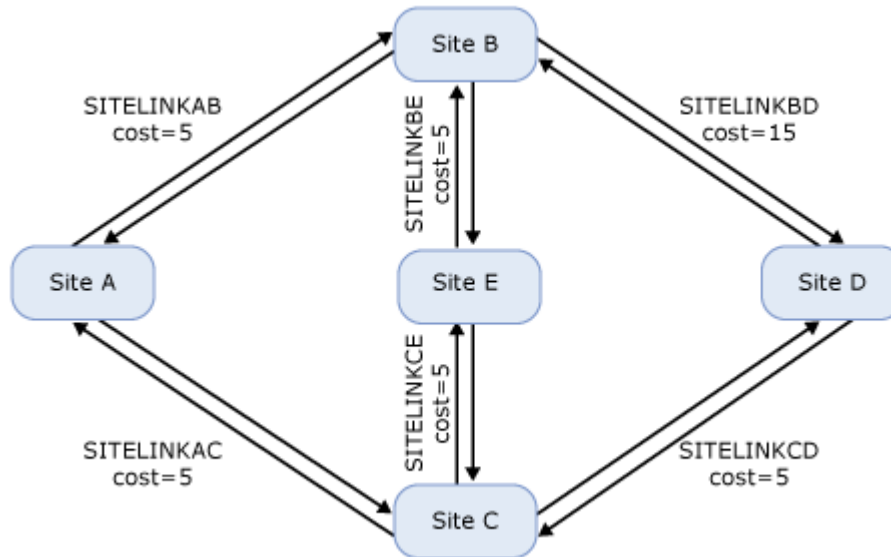
- Foreign Connectors
 - Send to Third Party Gateways
 - Uses Drop Directory
 - Configuration is stored in AD
 - Address Space defines routing
 - Uses Delivery Agent

Transport Pipeline

Architecture

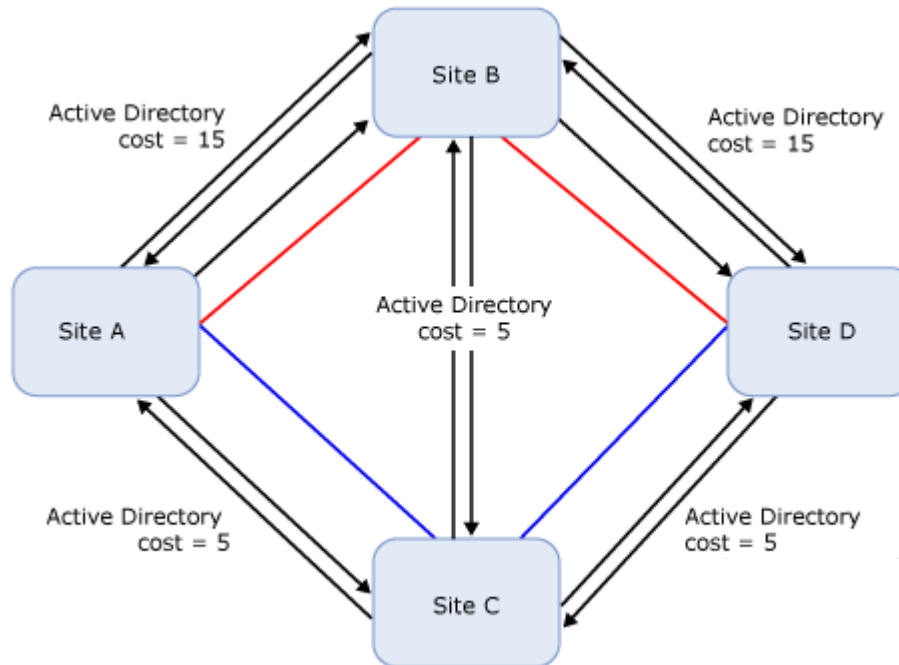


AD Sites



- Site A to Site D
- Site B to Site D
- Site A to Site E

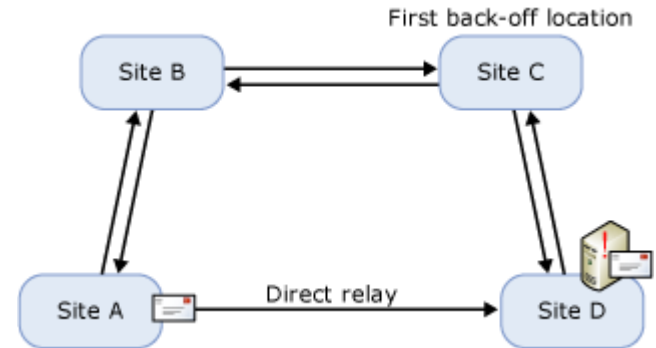
AD Sites – Exchange Cost



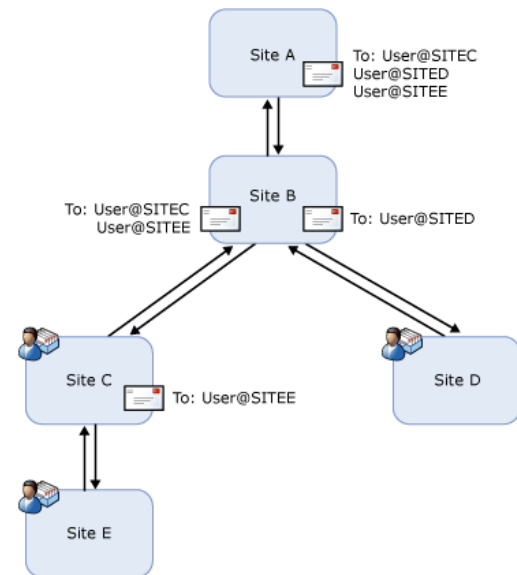
Message Routing

Delivery

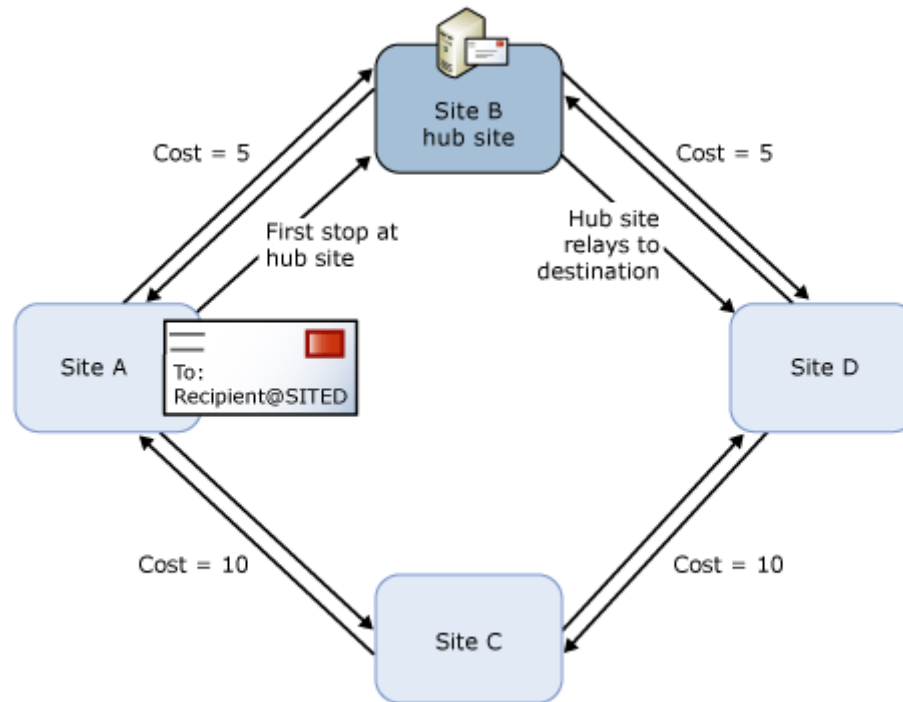
- Queue at point of failure



- Delayed fan out



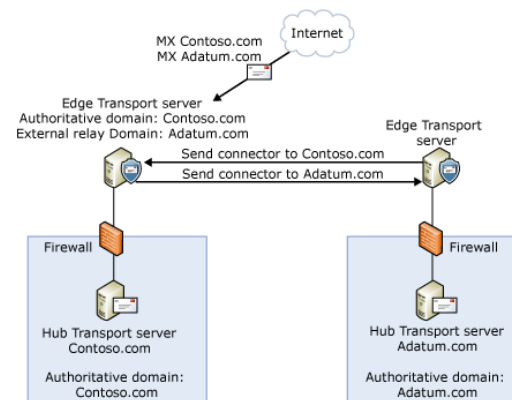
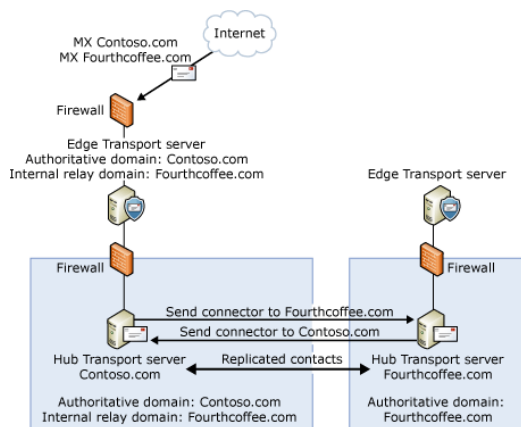
Hub Sites



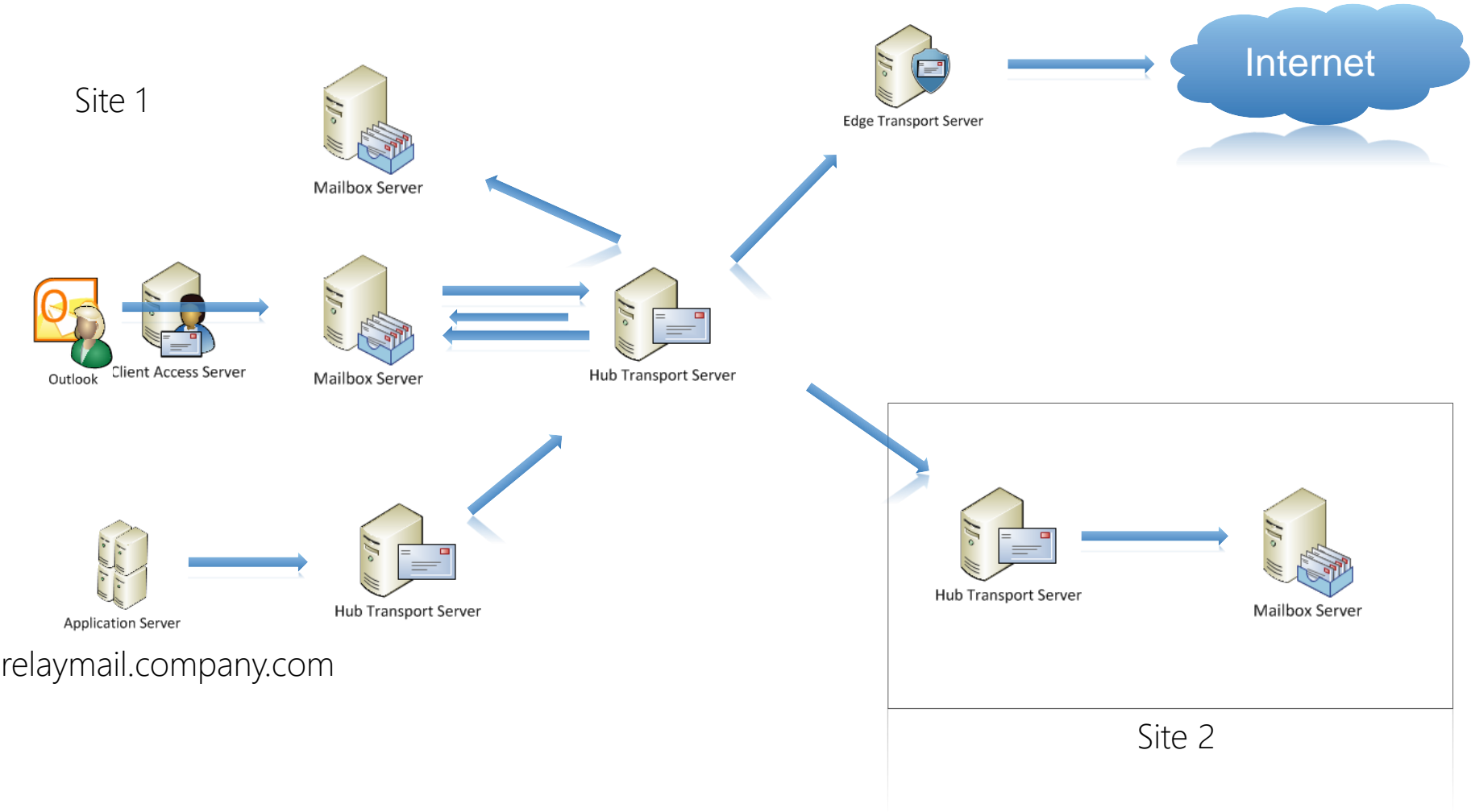
Understanding Transport

Accepted Domains

- Every Domain that Transport should relay or deliver
- Authoritative Domains
- Relay Domains
 - Internal Relay
 - External Relay
- Defines Email Address Policies



Mail Routing and Delivery Reports

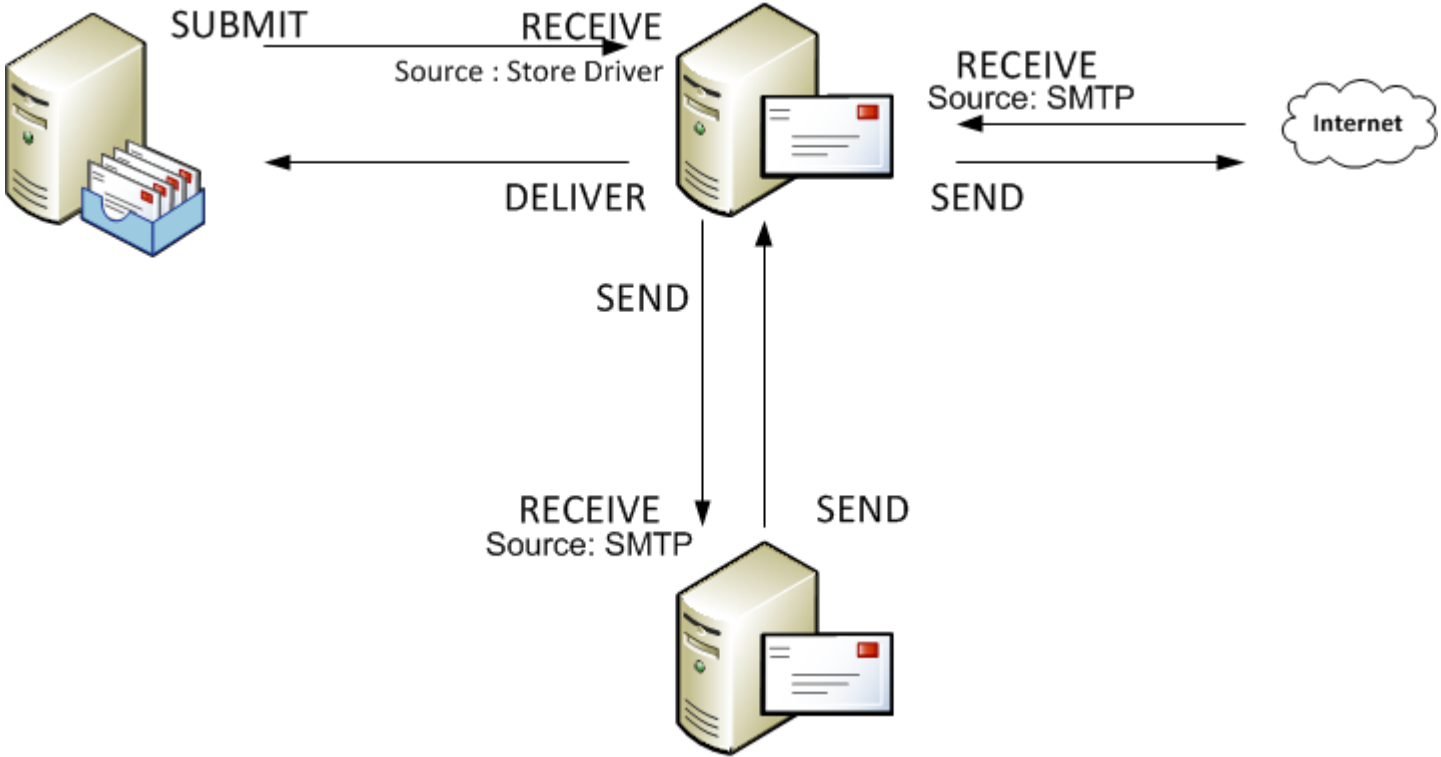


Understanding Transport

Queues

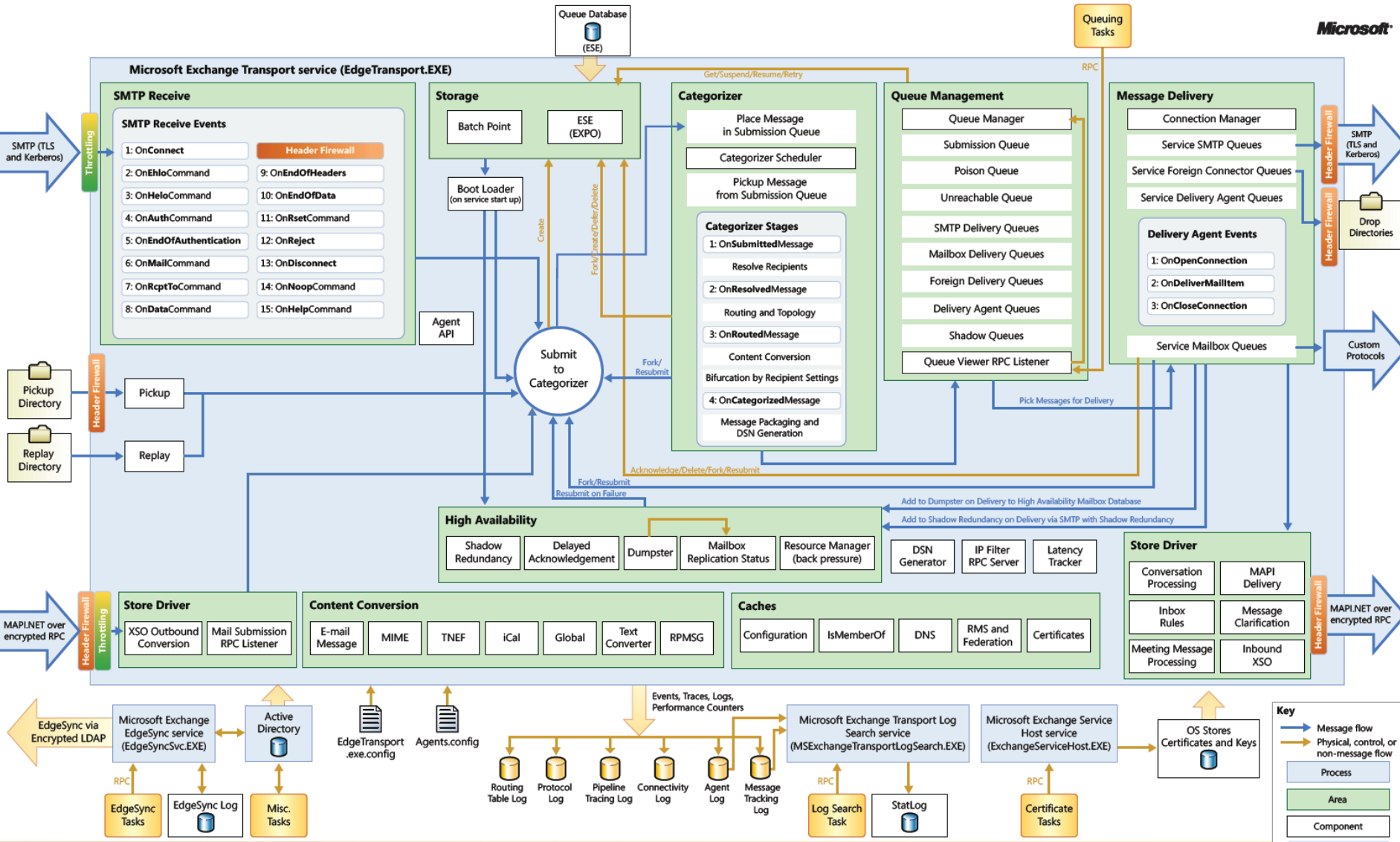
- Temporary holding location for messages that are waiting to enter the next stage of processing
- Uses an Extensible Storage Engine (ESE) database for queue storage
- Types
 - Submission queue
 - Mailbox delivery queue
 - One queue for every unique destination Mailbox server
 - Remote delivery queue
 - One queue for every unique destination SMTP domain or smart host
 - One queue for every unique remote Active Directory site
 - Poison message queue
 - Unreachable queue

Events



Transport Architecture

Microsoft



Hub Transport Server Role Architecture

Questions